

Output Register

OR 2088

OR 2088
OUT REGISTER



OUTPUTS

15 ○

14 ○

13 ○

12 ○

11 ○

10 ○

9 ○

8 ○

7 ○

6 ○

5 ○

4 ○

3 ○

2 ○

1 ○

0 ○

(NIM 16mA)

○ ○

Ser.

○

2088 01

This module is a 16 bit transducer-or interface-between the CAMAC dataway and an equipment requiring NIM excitations.

It can be operated in the level or the pulse mode for added flexibility. The pulse mode can be actuated either from CAMAC through a CAMAC command or from the experiment through a rear panel "Gate" input.

The most common application is in computer controlled experimental setup. Control bits can be fed into the fast electronic modules for changing signal routing, selecting different decision functions, modifying propagation delays.

The pulse mode of the OR 2088 lends itself to the automatic test through event simulation.

Camac Functions

Function 16, Sub-address 0: Write a 16 bit word into the register from W1 to W16,
Produce a Q-response and a X response

Function 17, Sub-address 0: Write a 16 bit word into the register at S1, Clear the register at S2,
Produce a Q-response and a X response.

This function is used to produce output pulses rather than levels.

Initialize (Z):

Clear the register.

Outputs

Standard NIM outputs, Current sink nominally 16mA,
LEMO RA 00 C50 connectors.
Unused outputs need not be terminated.

Inputs

Rear panel Gate bridged input
Standard NIM input,
LEMO RA 00 C50 connectors.

Physical

Single width CAMAC module, fully closed.
TTL and ECL implementation.
Other characteristics meet or exceed EUR 4100e.

Power Requirements

+6V 100mA -6V 380mA

SEN ELECTRONIQUE

Case Postale 39 CH 1211 Genève 13 tel (022) 44 29 46 tlx 23359 ch

ANNECY
MUNICH

HAMBURG
PARIS

LONDON
ZÜRICH



Nº index : 125000

N2369

N 2369

16V

N2369

N2369

N2369

N 2369

16V

N2369

V2369

N2369

N2369

16V

N2369

N2369

N2369

N 2369

16V

V 2369

V2369

REMARKS



CAMAC

.OR 2088.

TITLE

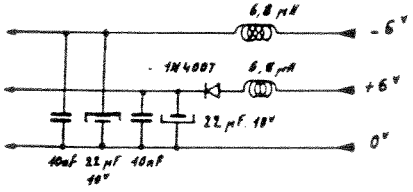
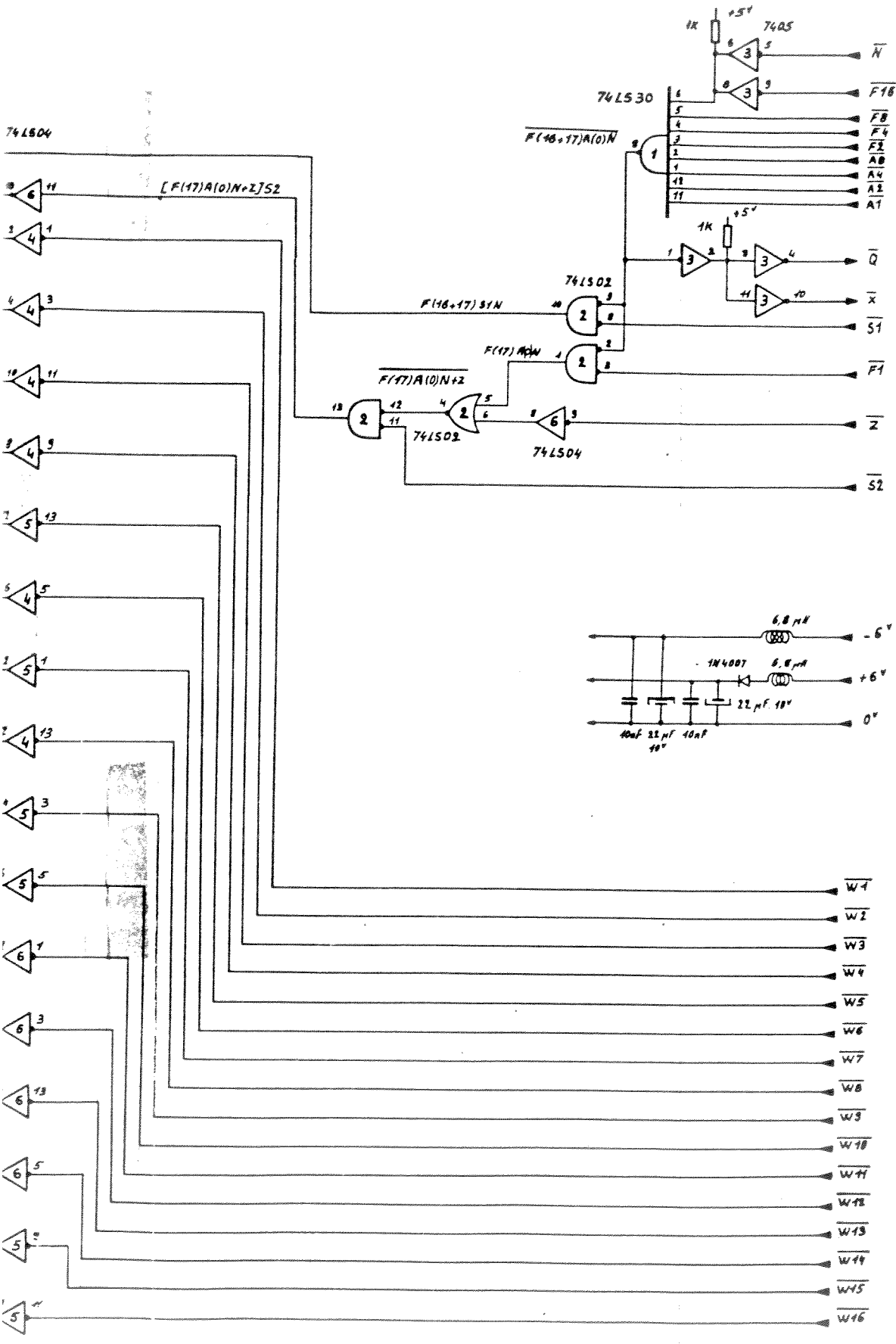
Output Register

DRAWN

CHECKED

DATE

DRAWING N°



REMARKS



CAMAC

OR 2088

TITLE

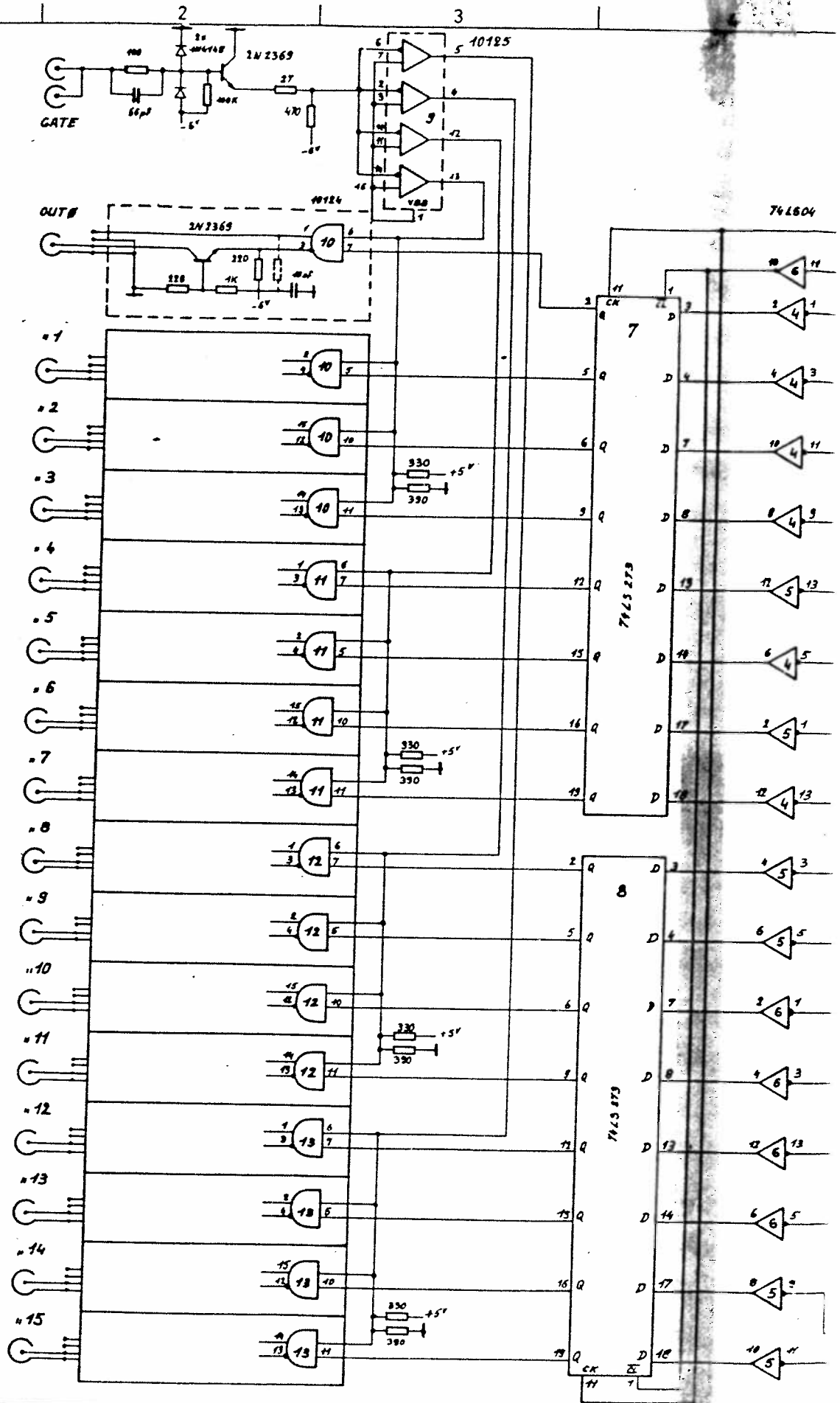
Output Register

DRAWN

CHECKED

DATE

DRAWING NO



REVISIONS

Pos.	Date	Drn	Chd	Description	Ser. N°

Print.Circ. 1556 AB

Unless otherwise specified

Resistances 1/4w 5%

REVISIONS: WRITE PERMISSION